



BERJAYA TIMES SQUARE HOTEL

Valid from 19 Feb - 31 Mar 2024



Premier	Adult			Child		Extension Per Room Per Night		
	Single	Twin	3rd Adult	With Bed	No Bed	Sgl/Twn	Extra Bed	CNB
Sun - Thur	219	149	139	139	79	159	69	15
Fri - Sat / School Holidays	239	159	149	149	89	179		
Peak (29 Mar)	259	169	159	159	99	189		
Club Premier	Adult			Child		Extension Per Room Per Night		
	Single	Twin	3rd Adult	With Bed	No Bed	Sgl/Twn	Extra Bed	CNB
Sun - Thur	319	199	159	159	89	259	89	19
Fri - Sat / School Holidays	339	209	169	169	99	279		
Peak (29 Mar)	359	219	179	179	109	289		
Club Premier Suite	Adult			Child		Extension Per Room Per Night		
	Triple	Quad	5th Adult	With Bed	No Bed	Trp/Quad	Extra Bed	CNB
Sun - Thur	229	189	N/A	N/A	89	469	N/A	19
Fri - Sat / School Holidays	239	199			99	489		
Peak (29 Mar)	259	209			109	499		

School Holidays: 09 - 17 Mar

Package Includes:

- ~ Two way transfer Singapore - Kuala Lumpur - Singapore by SVIP 28 - 40 Seaters Coach
- ~ One night accommodation at Berjaya Times Square Hotel with breakfast

Package Excludes:

- ~ Tourism Tax: MYR10 per room per night (Pay upon check-in)
- ~ Travel Insurance (Available at WTS counter)
- ~ Malaysia Visa if required (Available at WTS counter)

Tour Code: KULFE

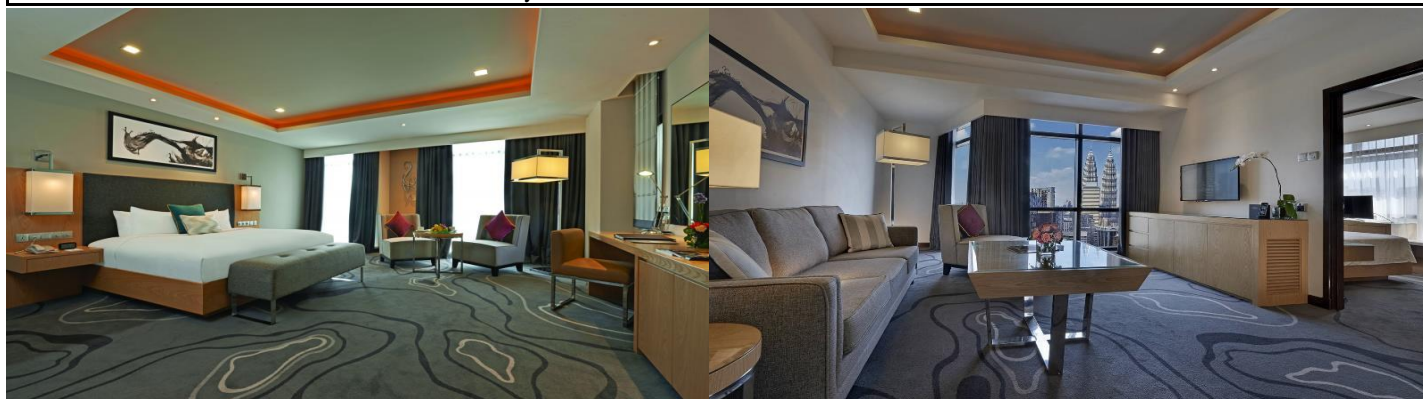
Updated on 31 Jan

Coach Schedule (Assemble 15 mins prior to all departure timing)

Singapore - Kuala Lumpur	0615 HRS	Our Tampines Hub (Coach Bay - Near Gate 11) Yishun (MRT Exit C - Taxi Stand)
	0630 HRS	Suntec City Mall (Suntec City Mall Tower 2 Coach Bay)
	0645 HRS	Choa Chu Kang (Private Bus Pick Up Point)
	0700 HRS	Jurong East (Venture Avenue Bus Bay No. 5)
Kuala Lumpur - Singapore	1345 HRS	Berjaya Times Square West Wing Hotel Lobby

Remark:

- ~ Seats and Accommodation are subjected to availability and confirmation
- ~ PZ Transfer to 2nd Link as and when necessary



WTStravel

TA 00637

CALL US NOW 6466 8558

Our Awards: SINGAPORE QUALITY CLASS A member of: NATAS

OUR OUTLETS:



f wtstravel

+65 9116 6994

wtstravelsg

wtstravel.com.sg

@ enquiries@wtstravel.com.sg