



# MELIÁ KUALA LUMPUR

Valid From 01 Apr - 30 Jun 2024



| Meliá Guestroom<br>(Standard Room) | Adult  |      |           | Child    |        | Extension Per Room Per Night |           |     |
|------------------------------------|--------|------|-----------|----------|--------|------------------------------|-----------|-----|
|                                    | Single | Twin | 3rd Adult | With Bed | No Bed | Sgl/Twn                      | Extra Bed | CNB |
| Sun - Thur                         | 239    | 159  | 129       | 129      | 69     | 179                          | 59        | 12  |
| Fri - Sat / School Holidays        | 259    | 169  | 139       | 139      | 79     | 199                          |           |     |
| Premium Guestroom<br>(Deluxe Room) | Adult  |      |           | Child    |        | Extension Per Room Per Night |           |     |
|                                    | Single | Twin | 3rd Adult | With Bed | No Bed | Sgl/Twn                      | Extra Bed | CNB |
| Sun - Thur                         | 249    | 169  | 129       | 129      | 69     | 199                          | 59        | 12  |
| Fri - Sat / School Holidays        | 269    | 179  | 139       | 139      | 79     | 219                          |           |     |
| The Level                          | Adult  |      |           | Child    |        | Extension Per Room Per Night |           |     |
|                                    | Single | Twin | 3rd Adult | With Bed | No Bed | Sgl/Twn                      | Extra Bed | CNB |
| Sun - Thur                         | 269    | 179  | N/A       | N/A      | 69     | 239                          | N/A       | 12  |
| Fri - Sat / School Holidays        | 289    | 189  |           |          | 79     | 259                          |           |     |

**School Holidays: 25 May - 23 Jun**

## Package Includes:

- ~ Two way transfer Singapore - Kuala Lumpur - Singapore by SVIP 28 - 40 Seaters Coach
- ~ One night accommodation at MELIÁ Kuala Lumpur with breakfast

## Package Excludes:

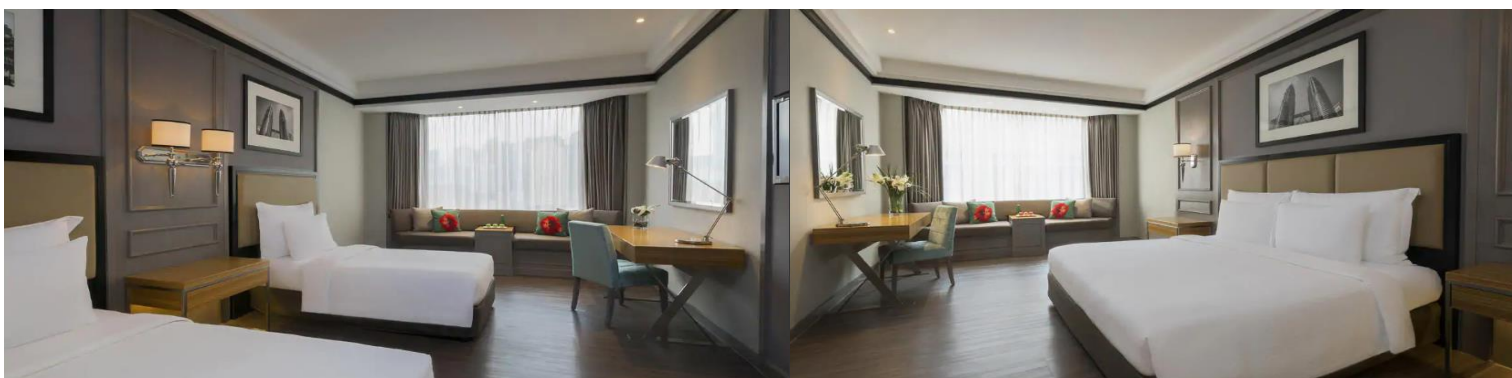
- ~ Tourism Tax: MYR10 per room per night (Pay upon check-in)
- ~ Travel Insurance (Available at WTS counter)
- ~ Malaysia Visa if required (Available at WTS counter)

## Remark:

- ~ Seats and Accommodation are subjected to availability and confirmation
- ~ PZ Transfer to 2nd Link as and when necessary

## Coach Schedule (Assemble 15 mins prior to all departure timing)

|                          |          |                                                                                |
|--------------------------|----------|--------------------------------------------------------------------------------|
| Singapore - Kuala Lumpur | 0615 HRS | Our Tampines Hub (Coach Bay - Near Gate 11)   Yishun (MRT Exit C - Taxi Stand) |
|                          | 0630 HRS | Suntec City Mall (Suntec City Mall Tower 2 Coach Bay)                          |
|                          | 0645 HRS | Choa Chu Kang (Private Bus Pick Up Point)                                      |
|                          | 0700 HRS | Jurong East (Venture Avenue Bus Bay No. 5)                                     |
| Kuala Lumpur - Singapore | 1345 HRS | Berjaya Times Square West Wing Hotel Lobby                                     |



# WTS travel

TA 00637

**CALL US NOW 6466 8558**

Our Awards: SINGAPORE QUALITY CLASS A member of: **NTAS**

OUR OUTLETS:



[wtstravel](#)
 +65 9116 6994
 [wtstravelsg](#)
[wtstravel.com.sg](#)
[enquiries@wtstravel.com.sg](mailto:enquiries@wtstravel.com.sg)