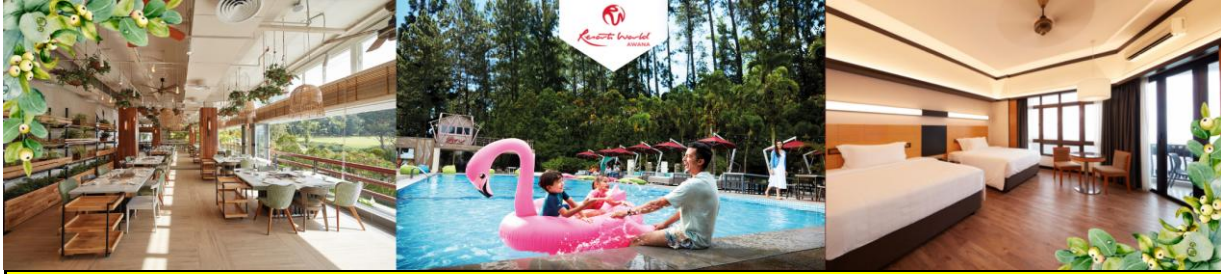


Resorts World Awana

Booking Period: Now till 30 Sep 2025 & Travel Period: 1 Jul till 30 Sep 2025



Superior Deluxe

Season	Check-in Date	Per Passenger		Per Room Per Night	
		Single	Twin	Extension	Room Only
Low	Sun - Thu	\$179	\$119	\$110	\$130
Peak I	Fri - Sat / Sep 6 - 13, 16	\$199	\$139	\$120	\$140

Room Upgrade

Superior Deluxe Sixer	\$35 Per Room Per Night
Executive Suite	\$140 Per Room Per Night

SkyWorlds Theme Park Ticket (Collection at Genting Main Terminal WTS Counter 1-4pm daily)

PWP	\$43 Per Ticket	Ticket Only	\$48 Per Ticket
-----	-----------------	-------------	-----------------

Package Includes:

- 2-Way Singapore - Genting Highlands - Singapore by SVIP 28 - 31 Seaters Coach
- 1-Night accommodation at Resort World Awana Hotel with the Choice of Room Type
- Daily Buffet Breakfast at JOM Makan Awana (Lobby Level) for 2 pax each room (For All Room Type)
- **Afternoon Tea at Hospitality Lounge Awana Garden (Lobby Level) for 2 pax each room (For Executive Suite only)**
- Return Awana Skyway Gondola Transfer for 2 pax each room
- Redemption only available at either Awana or SkyAvenue Station
- The cable car ticket must be utilized for both ways within same day

Tour Code: GENFEAWN

Updated on 7 Apr

Package Excludes:

- Sustainability Tax RM3 per room per night (Pay upon check-in)
- Tourism Tax of RM10 per room per night (Pay upon check-in)
- Travel Insurance (Available at WTS counter)
- Malaysia Visa if required (Available at WTS counter)



Note:

- All bookings are subject to availability and confirmation
- Guests checking in must be 18 years old or above
- The Awana Hotel pick-up and alighting point only applicable to Awana Hotel Package
- Rainy Day Guarantee does not apply to Genting SkyWorlds tickets. In the event of rain, there will be no refunds, exchanges, or revalidation allowed
- The Genting SkyWorlds Theme Park is closed every Tuesday, except on Malaysia Public Holidays
- No amendments or cancellations are permitted once a booking is made and confirmed
- No amendments to guest names are allowed once a booking is made and confirmed
- PZ Transfer to Immigration will be arranged as necessary
- Infants below 24 months are accommodated free of charge but do not have a designated seat
- Terms & Conditions apply

GPO Cable Car Operating Hours	Chin Swee Station Operating Hours:
7am - 11pm (Daily)	8am - 7pm (Daily)

Shuttle Bus Schedule (Between Awana Hotel - GPO Terminal)
From Hotel Lobby - 7am to 11pm (Daily)
From GPO Terminal - 7:30 to 11:15pm(Daily)

***Resorts World Genting reserves the right to change the schedule, with or without prior notice

Coach Schedule (Assemble 15 mins early prior to all departure timing)

	Departure time	Pickup Point
Singapore To Genting Highlands	0515 HRS	Pasir Ris (Downtown East - BEGONIA Pickup Point)
		Kovan Hub Bus Terminal (206 Hougang St. 21)
	0530 HRS	Tampines MRT (Exit B)
		Sengkang - Compass One (G16 Taxi Stand)
		Ang Mo Kio Blk 710 (Along AMK Ave 8)
		Suntec City Mall Tower 2 Coach Bay
		Yishun MRT Exit C (Along Yishun Ave 2)
	0545 HRS	The Woodleigh Mall (Bidadari Park Dr - Bus Stop)
		Bedok Djitsun Mall (Near Refuse Centre)
		Causeway Point (Infront of KFC)
0600 HRS	Redhill Market (79 Redhill Lane)	
	Jurong East (Venture Ave Bus Bay No: 05)	
2100 HRS	Bukit Panjang Plaza (Taxi Stand) - Platinum 21's at 0530 HRS	
	Choa Chu Kang MRT (Private bus Pick-up Point) - Platinum 21's at 0545 HRS	
	Boon Lay (Jurong Point 1 Carpark Entrance)	
	Tampines MRT (Exit B)	
	Ang Mo Kio Blk 710 (Along AMK Ave 8)	
	Sengkang - Compass One (G16 Taxi Stand)	
	Yishun MRT Exit C (Along Yishun Ave 2)	
2115 HRS	Kovan Hub Bus Terminal (206 Hougang St. 21)	
	Choa Chu Kang MRT (Private bus Pick-up Point)	
2130 HRS	Genting Main Terminal to All Above Points	
	2145 HRS	
Genting Highlands To Singapore	1230 HRS	Genting Main Terminal to All Above Points
	1245HRS	Awana Hotel Lobby (ONLY FOR AWANA HOTEL PACKAGE)

WTStravel

TA 09637

CALL US NOW 6466 8558

OUR OUTLETS:



Our Awards: SINGAPORE Quality Standard A member of: **NZAS**