

DUSIT PRINCESS MELAKA

(Launch Promo)



Booking Period: Now till 31 Dec 2025 & Travelling Period: 01 Jun till 31 Dec 2025

Deluxe (33 sqm King / Twin-bedded)	Adult			Child		Extension		
	Single	Twin	3rd Adult	With Bed	No Bed	Sgl/Twin	Extra Bed	Chd B'fast
Sun - Thur	159	109	109	109	69	109	50	10
Fri & Sat / School Holidays	169	119	119	119	79	119		
Peak	199	139	129	129	89	129		

School Holidays: 01 - 29 Jun / 06 - 14 Sep / 22 Nov - 31 Dec (Excluding Peak)

Peak: 01, 06 - 07, 27 - 28 Jun | 29 - 31 Aug / 05 - 06 Sep / 17 - 19 Oct / 19 - 31 Dec

ENCORE MELAKA

HOTEL - ENCORE MELAKA or V.V

PWP: S\$40 Per Ticket | Ticket Only: S\$45 Per Ticket

S\$38 Per Way

Package Include:

Tourcode: MKZFE-DSP
Updated by JT, 23 May

- ~ Two way Coach Transfer Singapore - Dusit Princess Melaka - Singapore by SVIP 28 - 40 Seater Coach
- ~ One night accommodation at Dusit Princess Melaka with breakfast

Package Exclude:

- ~ Heritage Tax & Tourism Tax (Pay upon check-in)
- ~ Travel Insurance (Available at WTS counter)
- ~ Malaysia Visa if required (Available at WTS counter)

Remark:

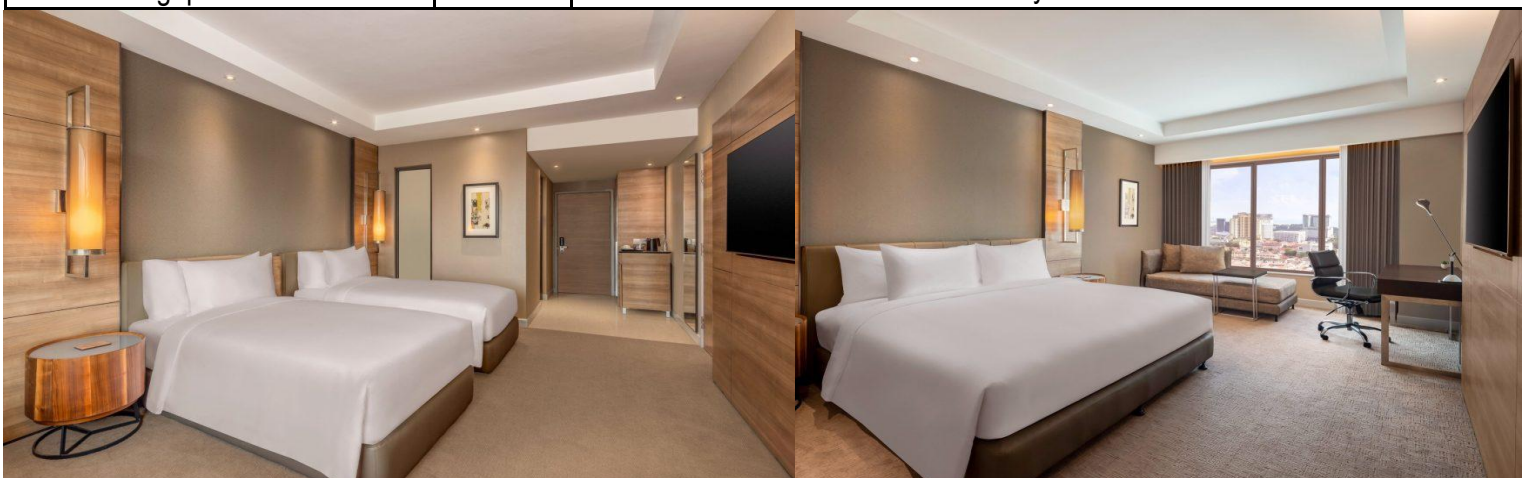
- ~ Seats and Accommodation are subject to availability and confirmation
- ~ PZ Transfer to Immigration will be arranged as necessary
- ~ The Encore Melaka is closed every Wednesday

ENCORE MELAKA Show Time

Mon & Sun	1430HRS / 1730HRS
Tue - Sat	1730HRS / 2030HRS
Wed	No Show

Coach Schedule (Assemble 15 mins prior to all departure timing)

Singapore - Melaka	0615 HRS	Our Tampines Hub (Coach Bay - Near Gate 11) Yishun (MRT Exit C - Taxi Stand)
	0630 HRS	Suntec City Mall (Suntec City Mall Tower 2 Coach Bay)
	0645 HRS	Choa Chu Kang (Private Bus Pick-up Point Bay No.5)
	0700 HRS	Jurong East (Venture Avenue Bus Bay No. 5)
Melaka - Singapore	1345 HRS	Assemble at Dusit Princess Hotel Lobby



WTS travel

TA 00637
CALL US NOW 6466 8558

Our Awards: SINGAPORE QUALITY CLASS A member of: **WTAS**

OUR OUTLETS:



wtstravel
 +65 9116 6994
 wtstravelsg
 wtstravel.com.sg
 enquiries@wtstravel.com.sg