

# DUSIT PRINCESS MELAKA



Booking Period: Now till 31 Mar 2025 & Travelling Period: 01 Jan till 31 Mar 2026

Deluxe (33 sqm   King / Twin-bedded)	Adult			Child		Extension		
	Single	Twin	3rd Adult	With Bed	No Bed	Sgl/Twin	Extra Bed	Chd B'fast
Sun - Thur	159	109	109	109	69	109	50	10
Fri & Sat / School Holidays	169	119	119	119	79	119		
Peak	199	139	129	129	89	129		
School Holidays: 14 - 22 Mar (Excluding Peak)   Peak: 01 - 03 Jan / 14 - 21 Feb / 20 - 22 Mar								
ENCORE MELAKA				HOTEL - ENCORE MELAKA or V.V				
PWP: S\$40 Per Ticket   Ticket Only: S\$45 Per Ticket				S\$38 Per Way				

## Package Include:

- ~ Two-way Coach Transfer Singapore - Dusit Princess Melaka - Singapore by SVIP 28 - 31 Seaters Coach
- ~ One-night accommodation at Dusit Princess Melaka with breakfast

## Package Exclude:

- ~ Heritage Tax & Tourism Tax (Pay upon check-in)
- ~ Travel Insurance (Available at WTS counter)
- ~ Malaysia Visa if required (Available at WTS counter)

## Remark:

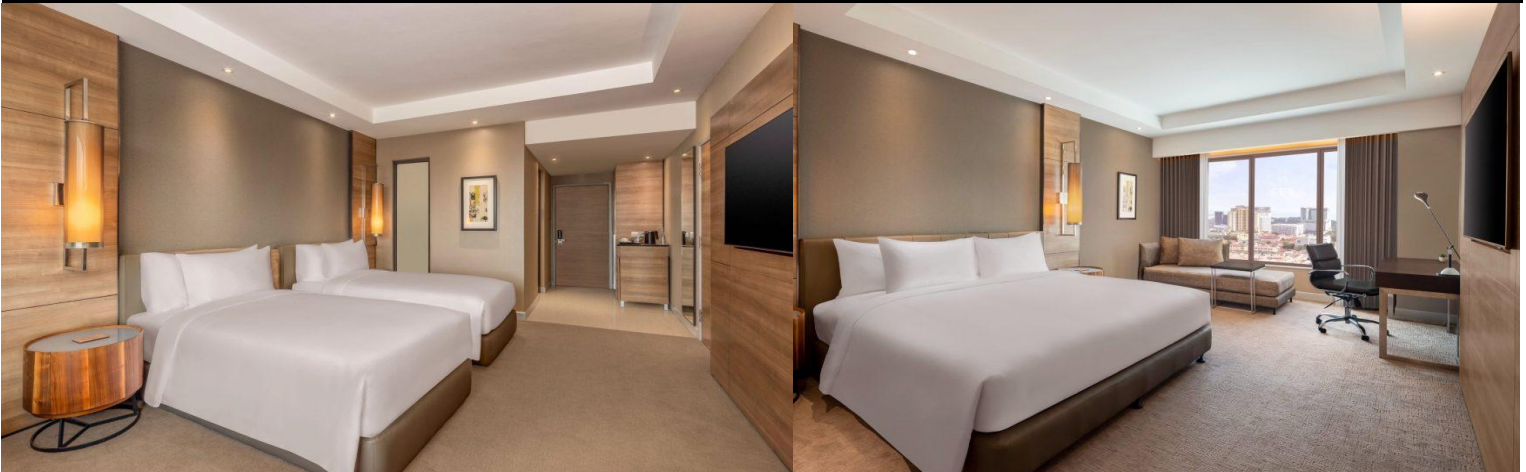
- ~ Seats and Accommodation are subject to availability and confirmation
- ~ PZ Transfer to Immigration will be arranged as necessary
- ~ The Encore Melaka is closed every Wednesday

## ENCORE MELAKA Show Time

Thur - Tue	1730HRS
Wed	No Show

## Coach Schedule (Assemble 15 mins prior to all departure timing)

Singapore - Melaka	0615 HRS	Our Tampines Hub (Coach Bay - Near Gate 11)   Yishun (MRT Exit C - Taxi Stand)
	0630 HRS	Suntec City Mall (Suntec City Mall Tower 2 Coach Bay)
	0645 HRS	Choa Chu Kang (Private Bus Pick-up Point Bay No.5)
	0700 HRS	Jurong East (Venture Avenue Bus Bay No. 5)
Melaka - Singapore	1345 HRS	Assemble at Dusit Princess Hotel Lobby



# WTS travel

TA 00637

CALL US NOW 6466 8558

Our Awards: SINGAPORE QUALITY CLASS A member of: NTAAS

OUR OUTLETS:



f wtstravel

+65 9116 6994

wtstravelsg

www wtstravel.com.sg

@ enquiries@wtstravel.com.sg