

DUSIT PRINCESS MELAKA

Booking Period: Now till 03 Jan 2027 & Travelling Period: 10 Jul 2026 till 03 Jan 2027

Deluxe (33 sqm King / Twin-bedded)	Adult			Child		Extension		
	Single	Twin	3 rd Adult	With Bed	No Bed	Sgl/Twin	Extra Bed	Chd B'fast
Sun - Thur	179	129	129	129	79	139	65	15
Fri & Sat / School Holidays	219	139	139	139	89	149		
Peak	249	159	149	149	99	179		
School Holidays: 05 - 13 Sep / 21 Nov - 31 Dec (Excluding Peak)								
Peak: 07 - 10 Aug / 07 - 09 Nov / 24 - 27, 31 Dec 2026 / 01 - 03 Jan 2027								
ENCORE MELAKA					HOTEL - ENCORE MELAKA - HOTEL			
PWP: S\$40 Per Ticket Ticket Only: S\$45 Per Ticket					S\$88 (Return Transfer)			

Tourcode: MKZFE-DSP / MKZENCORE-DSP (Encore Melaka)

Updated by JT, 08 Jul

Package Include:

- ~ Two-way Coach Transfer Singapore - Dusit Princess Melaka - Singapore by SVIP 28 - 31 Seaters Coach
- ~ One-night accommodation at Dusit Princess Melaka with breakfast

Package Exclude:

- ~ Heritage Tax & Tourism Tax (Pay upon check-in)
- ~ Travel Insurance (Available at WTS counter)
- ~ Malaysia Visa if required (Available at WTS counter)

Remark:

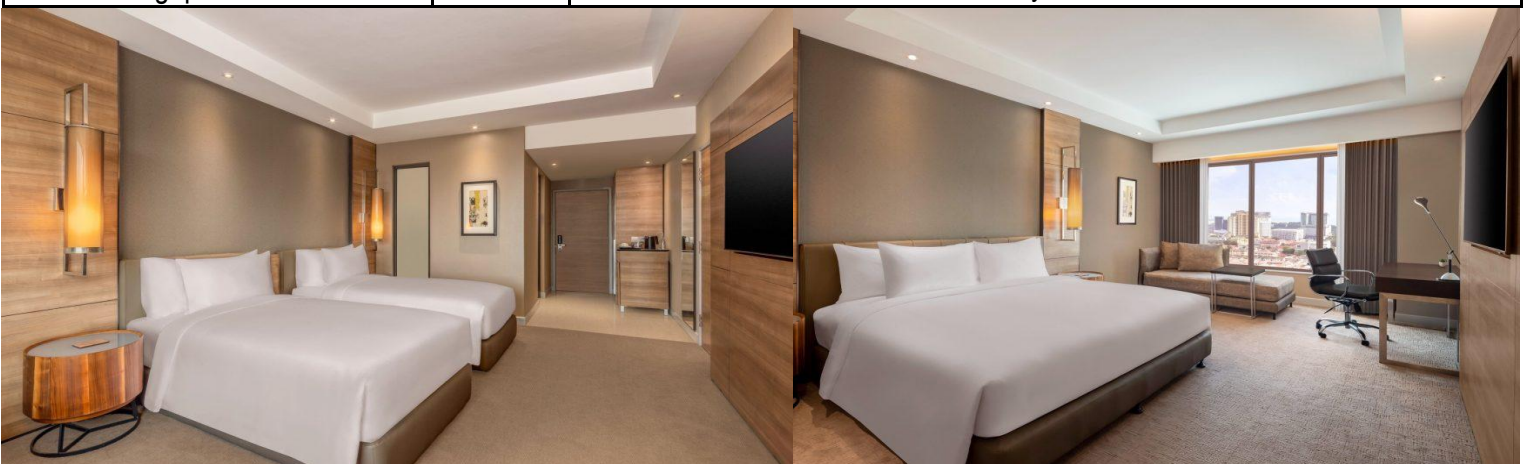
- ~ Seats and Accommodation are subject to availability and confirmation
- ~ PZ Transfer to Immigration will be arranged as necessary
- ~ The Encore Melaka is closed every Wednesday

ENCORE MELAKA Show Time

Thur - Tue	1730HRS
Wed	No Show

Coach Schedule (Assemble 15 mins prior to all departure timing)

Singapore - Melaka	0615 HRS	Our Tampines Hub (Coach Bay - Near Gate 11) Yishun (MRT Exit C - Taxi Stand)
	0630 HRS	Suntec City Mall (Suntec City Mall Tower 2 Coach Bay)
	0645 HRS	Choa Chu Kang (Private Bus Pick-up Point Bay No.5)
	0700 HRS	Jurong East (Venture Avenue Bus Bay No. 5)
Melaka - Singapore	1345 HRS	Assemble at Dusit Princess Hotel Lobby



WTStravel

TA 00637

CALL US NOW 6466 8558

Our Awards: SINGAPORE QUALITY CLASS A member of **NZQS**

OUR OUTLETS:



wtstravel
 +65 9116 6994
 wtstravelsg
 wtstravel.com.sg
 enquiries@wtstravel.com.sg